



DELAPRE PRIMARY SCHOOL

Welcome BACK TO SCHOOL

A Note From Teachers...

Welcome back!

It is great to be back at school! We have lots of exciting learning experiences planned for this term and we are looking forward to getting to know your child and supporting them in their education.

TOPICS WE'LL STUDY

We will be studying a range of interesting topics across the year. Our Autumn term topics are:

English - Personification poetry & WWI linked text

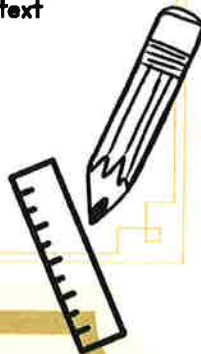
Maths - Place Value and Addition & Subtraction

Humanities - Britain in World War I

Science - The Circulatory Systems

Art/DT - Painting inspired by the greats

RE - Islam



SCHOOL ROUTINE & TIMES

Morning Routine:

Year 5 and 6 children should arrive at school at 8:45am.

Students will line up on their number on the playground and wait for a member of staff to escort them into school. Line numbers: 6Ca - 1, 6F - 2, 6CF - 3.

Lunchtime:

Year 6 lunch will be at 12:30pm. Children will have 20 minutes to eat their lunch and will then have time outside on the playground until 1:25pm. We are now offering hot dinners to all FSM children in KS2.

End of Day:

Students will be dismissed from the school at 3:10pm. If you are happy for your child to walk to and from school alone, please complete the letter sent via ParentPay.

For more detail on lesson times, please see your child's class timetable overleaf

ABOUT YEAR 6

Here are some important classroom procedures to remember for the school year:

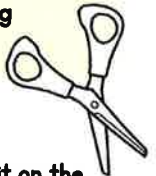
Reading

Your child will be expected to read on a regular basis and bring their reading diary and book to school every day. Reading Diaries will be collected in and marked on a Mon, Wed and Fri. We will expect to see a detailed comment on each of these days. Children have been shown examples of what we expect.

English - Set on Tuesday, due in the following Monday.

Spellings - Set and tested on a Tuesday on a weekly basis.

Maths - Set on a Friday, due in the following Thursday.



PE Days

Please ensure that your child has the correct kit on the appropriate day for their class and that all kit is named.

Outdoor kit should be a school rugby shirt, shorts or joggers and trainers. Indoor kit should consist of a white polo shirt/t-shirt, blue shorts and plimsols.

	6Ca	6CF	6F
Games (Outdoor Kit)	Mon	Mon	Mon
PE (Indoor Kit)	Wed	Fri	Thu

REMINDERS

Water Bottles - All children will need to bring in a named water bottle everyday and take it home at the end of the day

Pencil Cases - Children are allowed to bring in their own pencil cases and stationary. Any basic stationary will be provided by the school.

Snack Money - Snack money is due every term and can be paid on ParentPay

Bookbags - All children will need to bring a Delapre bookbag or back pack with them to school each day.

6Ca Timetable

2021-

	9:05 – 10:00		10:05 – 11:00		11:25 – 12:30		13:30 – 14:15	14:15 – 3:00		Things to Remember
Monday	Quiet Reading/Morning Work 8:45 – 9:00	Library	English	Maths	Break Time 11:05 – 11:25	Computing	Lunch 12:30 – 13:25	Games	PSHE	Reading Comment
Tuesday		RE Mrs Feetham		French Mr Kelly		Music Mrs Feetham		Maths	SPaG	English Homework Set
Wednesday		English	Maths	PE Gym		Science		Reading comment		
Thursday		English	Maths	Humanities		Humanities		Assembly	PE Kit	
Friday		English	Maths			Art/D.T Miss Cartwright/Mrs Feetham		Maths Homework Due		
						Reading Comprehension			Reading comment	
						Maths Homework Set				

6CF Timetable

2020-21

		9:00 – 10:00	10:00 – 11:00		11:25 – 12:30		13:30 – 14:20	14:20 – 3:10	Things to Remember
Monday	Quiet Reading/Morning Work 8:45 – 9:00	English	Maths	Break Time 11:05 – 11:25	Reading Comprehension	Lunch 12:30 – 13:25	Games	Spellings	Reading Comment Spellings Due
Tuesday		French	Music		RE Mrs Clayton		Maths	SPaG	English Homework Set
Wednesday		English	Maths		Humanities		Art/DT		Reading comment
Thursday		English	Maths		Science		Science	Assembly	Maths Homework Due/ Maths Homework Set
Friday		English	Maths		PE		PSHE	ICT	Reading comment

6F Timetable

2020-21

	9:00 – 10:00		10:00 – 11:00	11:25 – 12:30		13:30 – 14:20	14:20 – 3:10	Things to Remember
Monday	English		Maths	PHSE Mrs Feetham		Games	Science	Reading Comment English Homework Due
Tuesday	Music Mrs Woodgates		RE Mrs Feetham	French Mr Kelly		Maths	SPaG	English Homework Set Spellings set & tested
Wednesday (AW Duty Day)	Library	English	Maths	Science		Art/DT		Reading comment
Thursday	English		Maths	Computing		PE	Assembly	Maths Homework Due
Friday (AF Duty Day)	English		Maths			Humanities		Reading comment
				Reading Comprehension				Maths Homework Set

Quiet Reading/Morning Work 8:45 – 9:00

Break Time 11:05 – 11:25

Lunch 12:30 – 13:25